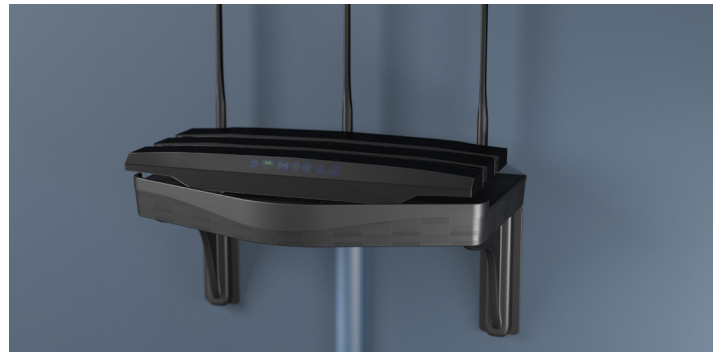


- Ideal for smart phones, tablets & smart speakers
- Adjustable brackets, to suit most wall sockets
- Shelf includes cable compartment



- **Adjustable brackets, to suit most sockets**
- **Peel & Stick - holds up to 1.4Kg**
Screw-fix option holds 4.53Kg plus
Example: 12.9" iPad Pro - 0.64Kg
 iPhone 11 Pro Max - 0.25Kg
 Echo Dot 3rd Gen - 0.3Kg
- **Shelf includes cable hider compartment**
- **For easy install around outlets, or other wall spaces**
- **Patent Pending**

Colour	Part Code	EAN
White	CTSW001	5056335602438
Black	CTSB001	5056335602803