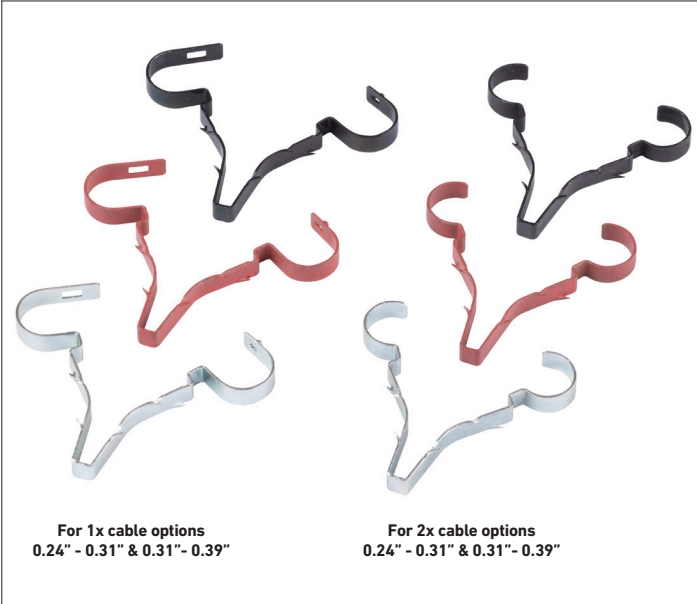




**Stag Clip Single**

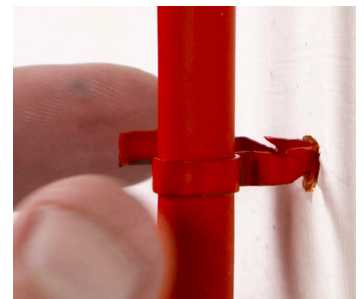


**Stag Clip Twin**



**For 1x cable options**  
0.24" - 0.31" & 0.31" - 0.39"

**For 2x cable options**  
0.24" - 0.31" & 0.31" - 0.39"



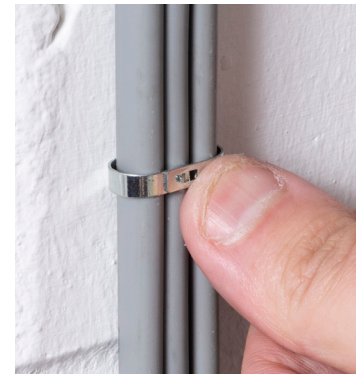
**Drill pilot hole & select appropriate size of Stag Clip**



**Rest Stag Clip in the pilot hole ready to accept cable(s)**



**Insert cable(s) before squeezing the smooth head**



**Push home to secure the Stag Clip and cable(s)**

**Use Stag Clips to secure cables, with no screw or wall anchor needed! Stag Clips can be first-fixed with their lower barbs gripping in pilot-holes, ready for second-fix cabling works.**

- 1780°F melting point
- Can be 1st fix rested in pilot hole, before 2nd fix inserting cable(s)
- No screw required, simply push smooth head into pilot hole, 0.22" or 0.24" x 1.18" deep
- Head sections overlap for secure cable fitment. 2x cable versions lock together when overlapped
- Supplied in bags of 50 pcs

