

## **Micro+ Trunking** 20mm x 10mm

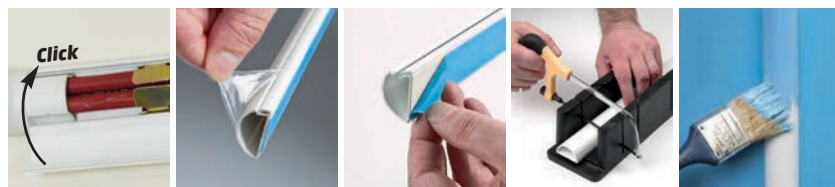


**D-Line 20 x 10mm Micro+ profile gives a neat solution for single cables, while offering additional internal capacity that can be useful around corners.**

Complementary Clip-Over bends and tees are incredibly easy to install. Ideal for flexible cables (up to 8mm outer diameter), also fibre-optic, satellite/aerial and broadband cable installations.

- Discreet and stylish appearance; only 20 x 10mm (WxH)
- Patented hinge & click-lock lid
- Paintable
- Clip-Over accessories available for perfect finish
- 'Easy to install, looks great!'
- Self-adhesive
- Fully safety tested and certified to BS EN 50085-1:2005

Code	Description
<b>R2D2010W</b>	(L) 2m x (W) 20mm x (H) 10mm White
<b>R3D2010W</b>	(L) 3m x (W) 20mm x (H) 10mm White



## Product Specification

<b>Production method</b>	<ul style="list-style-type: none"><li>• Single piece design, produced in one single process by extrusion</li></ul>
<b>PVC base &amp; lid</b>	<ul style="list-style-type: none"><li>• Light weight, easy to handle &amp; cut - lid cannot detach</li><li>• Self-extinguishing</li><li>• Can be drilled</li></ul>
<b>Elastomer hinge</b>	<ul style="list-style-type: none"><li>• Effectively bonds base &amp; lid</li><li>• Impact absorbing</li><li>• Can be opened &amp; closed thousands of times</li></ul>
<b>Available colours</b>	<ul style="list-style-type: none"><li>• White</li></ul>
<b>UV stabilised</b>	<ul style="list-style-type: none"><li>• Will not discolour or turn brittle in sunlight</li></ul>
<b>Operating temperature</b>	<ul style="list-style-type: none"><li>• Stable between -30°C upto +60°C</li></ul>
<b>½ round design</b>	<ul style="list-style-type: none"><li>• No sharp edges</li><li>• Enables subtle aesthetics</li><li>• Blends above skirting</li></ul>
<b>External dimensions</b>	<ul style="list-style-type: none"><li>• 20mm x 10mm (w x h)</li></ul>
<b>Tape</b>	<ul style="list-style-type: none"><li>• Foam backed 1mm thick</li><li>• Effective on clean dry surfaces</li><li>• Caution, can spoil surfaces on removal</li></ul>
<b>Paintable</b>	<ul style="list-style-type: none"><li>• Scuff using gentle abrasive such as sandpaper, so paint keys for best results</li></ul>
<b>Weight</b>	<ul style="list-style-type: none"><li>• 0.08 kg per metre</li></ul>
<b>Packaging</b>	<ul style="list-style-type: none"><li>• Each length supplied with removable film cover</li></ul>
<b>Capacity</b>	<ul style="list-style-type: none"><li>• If containing 240v cables leave 45% of internal capacity for air circulation</li></ul>
<b>Quality approvals</b>	<ul style="list-style-type: none"><li>• BS EN 50085 - 1:2005 Part 1    SGS Registration ELS 185841/2/C/AB/16</li></ul>