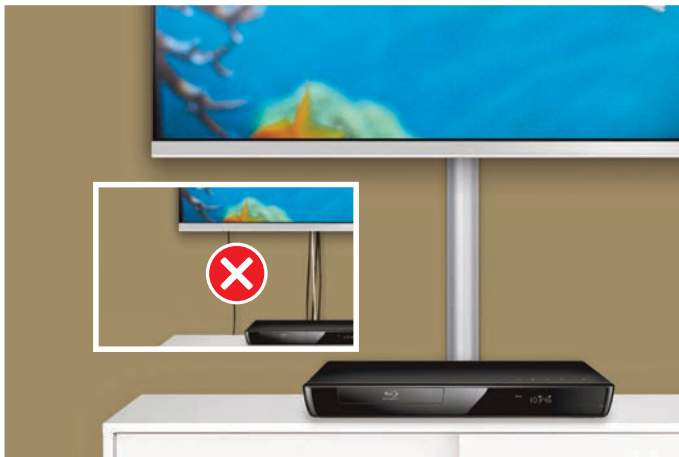
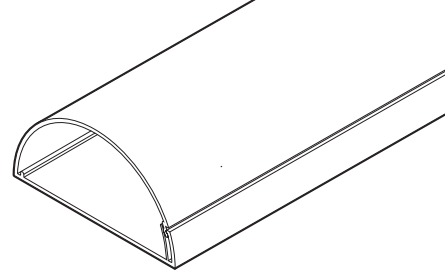


D-LINE®

Maxi Trunking 50mm x 25mm



D-Line 50x25mm Maxi is a versatile trunking, providing capacity for several cables.

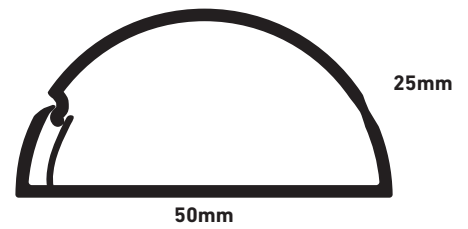
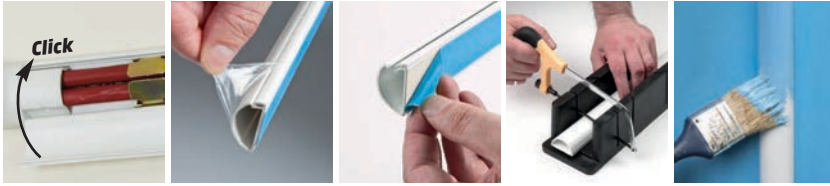
A wide range of Clip-Over and Smooth-Fit accessories are available.

The size, capacity and range of colours makes this profile a market-leading solution that is ideal for many AV, electrical and datacoms projects.

- Unique stylish 'D-Line' appearance
- Saves channelling walls
- Self-adhesive
- Clip-Over & Smooth-Fit accessories for perfect finish
- A smart alternative to traditional offers
- No sharp edges, gentle on impact
- Fully safety tested and certified to BS EN 50085-1:2005

Code	Description	Colour
R2D5025W	(L) 2m x (W) 50mm x (H) 25mm	White
R3D5025W	(L) 3m x (W) 50mm x (H) 25mm	White
R2D5025M	(L) 2m x (W) 50mm x (H) 25mm	Magnolia
R2D5025A	(L) 2m x (W) 50mm x (H) 25mm	Aluminium Effect
R2D5025B	(L) 2m x (W) 50mm x (H) 25mm	Black
R2D5025O	(L) 2m x (W) 50mm x (H) 25mm	Oak Effect

Maxi Trunking 50mm x 25mm



Product Specification

Production method • Single piece design, produced in one single process by extrusion

PVC base & lid • Light weight, easy to handle & cut - lid cannot detach
• Self-extinguishing
• Can be drilled

Elastomer hinge • Effectively bonds base & lid
• Impact absorbing
• Can be opened & closed thousands of times

Available colours • White • Magnolia • Black • Aluminium Effect • Oak Effect • Red

UV stabilised • Will not discolour or turn brittle in sunlight

Operating temperature • Stable between -30°C upto +60°C

½ round design • No sharp edges
• Enables subtle aesthetics
• Blends above skirting

External dimensions • 50mm x 25mm (w x h)

Tape • Foam backed 1mm thick
• Effective on clean dry surfaces
• Caution, can spoil surfaces on removal

Paintable • Scuff using gentle abrasive such as sandpaper, so paint keys for best results

Weight • 0.27 kg per metre

Packaging • Each length supplied with removable film cover

Capacity • If containing 240v cables leave 45% of internal capacity for air circulation

Quality approvals • BS EN 50085 - 1:2005 Part 1 SGS Registration ELS 185841/2/C/AB/16