



CABLE MANAGEMENT AT HOME

See cables...



Think D-Line...



Cable Management in the Home

Cables are essential to our everyday living, but they require careful consideration. This collection of articles addresses common cable management issues around the home, and innovative 'How To' solutions.

Pg 3

CORD ORGANIZERS THAT MAKE CLEANING EASIER



Messy cords create tripping hazards, burn, discoloring, and are a fire hazard. They also clutter the home and are a nuisance to clean up.

Top Tip
Use a cord organizer to keep your cords organized and out of the way. They are available in a variety of colors and designs to match your home decor.

Pg 4

IN CHARGE OF CABLES!

As much as we love all of our gadgets, we have a list of complaints against the cables that charge them. A recent survey from D-Line, the cable management experts, ranks our top ten cable means -

1. When someone has removed the charger cable
2. Being unable to clean around the cables
3. Not enough plug sockets for all our cables & devices
4. Look a complete mess
5. Excessive heat
6. Cables often too long taking up floor/desk space
7. Cable insulation splits & ends break from regular usage
8. When finished, cables come to rest in an unwanted location
9. Unwanted disconnection of other devices & equipment & internet, TV, headset

Top Tips
Use a cord organizer to keep your cords organized and out of the way. They are available in a variety of colors and designs to match your home decor.

Pg 5

FLOOR TRIM THAT HIDES CABLES!



Some floors have carpets, while others are covered by laminate or ceramic. In common, it's not difficult to hide cords & wires. When cables come along they usually get left in the open and are a nuisance to clean up.

Top Tip
Use a cord organizer to keep your cords organized and out of the way. They are available in a variety of colors and designs to match your home decor.

Pg 6

MAKE YOUR GYM FIT FOR CABLES



Setting up for home fitness, perhaps by connecting the computer to the TV, or by connecting the TV to the computer, is a common sight. However, the cables are often messy and cluttered.

Top Tip
Use a cord organizer to keep your cords organized and out of the way. They are available in a variety of colors and designs to match your home decor.

Pg 7

FOR HOME-WORKING & OFFICES, 'SEE CABLES, THINK D-LINE ...



Personal office set-ups, at home or company, typically depend on an unruly tangle of cables to power the equipment and devices we need to do our jobs.

Top Tip
Use a cord organizer to keep your cords organized and out of the way. They are available in a variety of colors and designs to match your home decor.

Pg 8

KEEPING WIRES SAFE FROM PETS IS SIMPLE AS A, B, C... D-LINE



Pet owners can make their homes (& pets) safer, without compromising on aesthetics, by easy-to-use products which keep wires away from their furry friends.

Top Tip
Use a cord organizer to keep your cords organized and out of the way. They are available in a variety of colors and designs to match your home decor.

Pg 9

CABLE MANAGEMENT FOR TV WALL-MOUNTS



As slim TV's inspire demands for wall-mount brackets, so D-Line is the perfect solution for sorting your cables.

Top Tip
Use a cord organizer to keep your cords organized and out of the way. They are available in a variety of colors and designs to match your home decor.

Pg 10

RACEWAYS THAT STICK AROUND, FOR AS LONG AS YOU LIKE



Be sure you've covered the length of exactly where you want to run the cables, and installed the raceway in the correct position.

Top Tip
Use a cord organizer to keep your cords organized and out of the way. They are available in a variety of colors and designs to match your home decor.

Pg 11

DESIGNING THE PERFECT RACEWAY



The design of the raceway is a key factor in its success. It should be designed to fit the cables and the environment it is used in.

Top Tip
Use a cord organizer to keep your cords organized and out of the way. They are available in a variety of colors and designs to match your home decor.

CABLE SAFETY AT HOME

Cables, plugs & power strips can be dangerous, and a cause of fires and electrocutions. This D-Line guide explains how cable safety at home can be easy to follow...



Visit www.d-line-it.com

CORD ORGANIZERS THAT MAKE CLEANING EASIER



Messy cords create hotspots where bugs, dust-mites and allergens all thrive, armies of little critters multiplying beyond reach of our regular cleaning...



Perhaps this is unsurprising because when cables are behind TV's or desks; loose around floor edges; or lying on benches, they can seem impossible to clean around?

But don't worry, one of germs' most popular hangouts is easy to sort – by using D-Line's family of cable organizers.



D-Line's patented raceways are very easy-to-use, and can blend with decor so the cords seem to disappear!

½ round lengths simply peel & stick, and are ideal for hiding cables above baseboards and from wall-mount TV's. ¼ round options are floor trims that hide cables. Being non-metallic, D-Line lengths can be cut if required, with corner bends & connectors also available for a perfect finish.

No electrical competence is required, as cables simply rest in the D-Line lengths which have a click-lock lid; this can later be opened or closed to add or remove cords. D-Line raceways are shaped for easy wiping too!

For power strips and cable spaghetti, use D-Line Cable Management Boxes. Having 3x cable entry/exit points at rear, makes the D-Line Cable Boxes simple to use... the breeding ground, where all sorts used to cling, becomes reclaimed space - **that is easy to clean around!**



IN CHARGE OF CABLES!

As much as we love all of our gadgets, we have a list of complaints against the cables that charge them. A recent survey from D-Line, the cable management experts, ranks our **top ten cable moans** -



1. When someone has removed the charger cable
2. Being unable to clean around the cables (dust, crumbs...)
3. Not enough plug sockets for all our cables & devices
4. Look a complete mess
5. Expensive to replace
6. Cables often too long, taking up floor/desk/bench space
7. Cable insulation splits, & ends break, from regular usage
8. When knotted, takes time to unravel
9. Picking up after dropping behind a table
10. Unwanted disconnections of other devices & equipment e.g timers, TV's, freezers



D-Line Cable Organizer Boxes can sort common cable woes by providing a neat home for hiding power strips and cable clutter.

The stylish boxes are produced from robust ABS material, electrically safe and tested, with four click-lock points for secure lid attachment. Three rear cable entry and exit slots enable the cords to most easily reach out to their devices.

In pics from this example in UK, the Cable Boxes are housing a power strip and plugs while keeping the charger cables handy and exactly where we want them. Space on the worktop can be used again, and the area is easier to clean.

Top Tips

1. Check the size of your power strip & plugs so all can be accommodated in the Cable Organizer Box.
2. Allow the cables a bending radius, do not over-bend cables. If in doubt, consult a qualified electrician.
3. Plan your plug layout; put plugs for left or right-side devices, to the left or right-side.
4. Pre-wrap excess cords, for easier storage in the Cable Organizer Box.

FOR HOME-WORKING & OFFICES, 'SEE CABLES, THINK D-LINE'...



Cable Organizer Boxes



3x entry/exit slots

Personal office set-ups, at home or company, typically depend on around twenty-foot of cables to power the equipment and devices we need to do our jobs.

Then we complain when cables go 'missing', look out-of-place or seem almost impossible to clean around. But it doesn't have to be that way, with friendly cable organizers readily available...

D-Line's family of 'easy-to-use, look great!' cable management products require no electrical competence, as most can be retro-fitted around existing cables.

Cable Organizer Boxes hide power strips and cable clutter. Popular on floors and desktops, cords go in or out via rear exits. The D-Line Cable Boxes combine style, safety & robustness in a practical design. When in the Cable Organizer Box, power strips and plugs become less accessible; wasted space is returned; cleaning is easier; and the cables remain where you need them to be and less likely to be 'borrowed!' by others.

D-Line **Cable Tube's** are flexible and pre-split to welcome cables dropping behind a desk. Users simply push in (or pull out) cords via the split-seam – different to expandable **Spiral Wraps** which can be wrapped around cord bundles up to 1.5-inch diameter. D-Line **Cable Zipper** works best for encapsulating several cords that are over six foot long.

For underside a desktop or up a desk leg, **D-Line Raceway's** are peel & stick lengths, that have hinged and click-lock lid so it's easy to add or remove cords at any time. The modern ½- round shape is gentle on impact, easy to clean, and non-metallic so lengths are easy to cut if needed.

Around the desk, **Cable Bases** are peel & stick solutions for keeping cables (or pens) where you want - so eliminating wasted time. And hook & loop **Band** is ideal for sorting loose cables, keeping them close, while being reusable and multi-purpose!

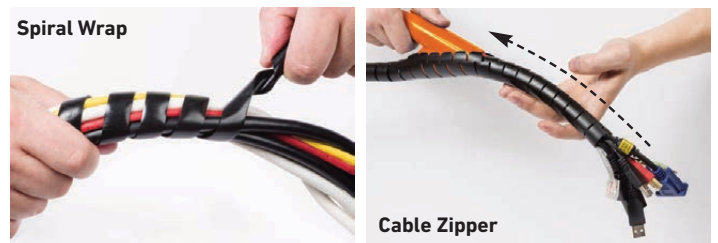
Wherever we work, be it at home or an office, with a D-Line solution for every scenario, cable management has never been easier...



½-round Raceway



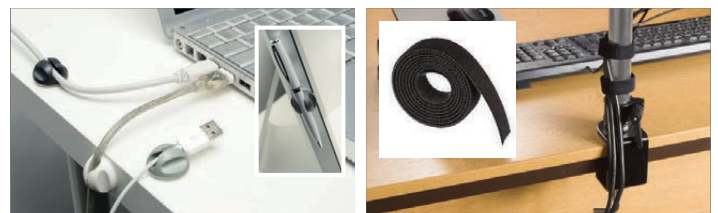
Pre-Split Cable Tube



Spiral Wrap

Cable Zipper

Keep cables where you want!... Bases; Band



FLOOR TRIM THAT HIDES CABLES!



Pic 7/8 x 7/8" White
1/4-Round

Some floors have carpets, while others are covered by laminate or ceramics. In common, all make it difficult to hide cords & wires.

When cables come along they'll usually be left to lie around, looking awkward and exposed, longing for the type of attention that the safe haven of a D-Line cable path can offer...

Around a floor perimeter, D-Line's patented 1/4-round cable hiders make a neat trim that doubles as a cable path.

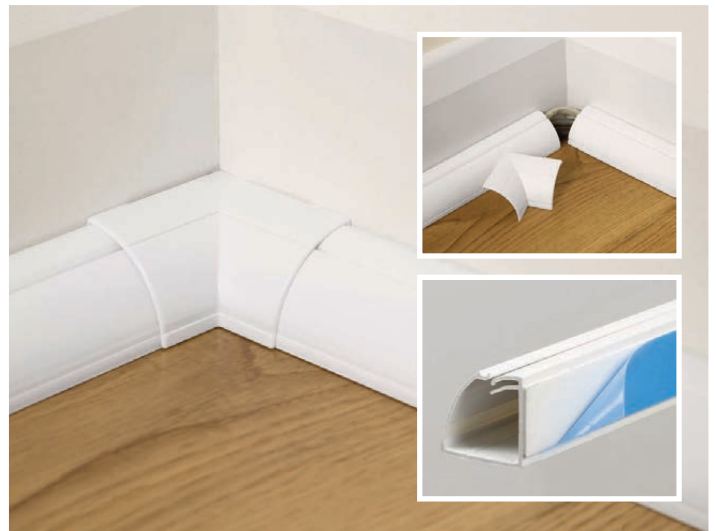
Unlike other floor edgings, there is no need to measure layouts precisely; because D-Line accessory bends can simply clip over corners in ways that cover any gaps or oblique cuts.

Professional installers, familiar with traditional solid floor edgings, respect how in comparison the D-Line Floor Trim typically takes only half the installation time.

The non-metallic raceway lengths can be cut if required, to accept a cable inlet/outlet accessory that might be located near to a floor-standing light, speaker or I.T equipment.

Once installed, the hinged lid can be pulled down ready to accept cables. After inserting the cables, the lid can be snapped shut, before attaching any corner bends or end-caps that might be required.

Being easy to add or remove cables later, the cable path is always ready and able to make cables seemingly disappear!



Note - Cable Inlet/Outlets



The Cable Inlet/Outlet accessory (aka Cable Entry/Exit) can be cut at top or bottom, according to where the cable entry or exit is required.

MAKE YOUR GYM FIT FOR CABLES



CC-1 Cable Cover

Setting up for home fitness, perhaps by converting the garage or turning the utility room to a personal gym, conjures images of a treadmill, cross-trainer, exercise bike and whatever else being too close for comfort. Perhaps with a weights bench in close proximity?

Instead of attaining fitness, with cables strewn across the floor to their nearest receptacle, the best of intentions can be spoiled by cable hazards. And with equipment usually crammed in a tight space, the risk of serious injury is so much greater.

It means before treating yourself also to that special accessory, be it a punchbag, or mirror wall, scales or even a shower cubicle, you'd be wise to think first about cable management.

D-Line Floor Cable Protectors are supplied (boxed or bagged) in a roll that uncoils to lay flat & cover cables, so reducing the risk of trips or falls. The pre-split rear reveals a cavity that fits over the cables, with ribs on the underside that minimize movement. The top has tapered sides that are friendly to foot traffic.

The D-Line Floor Cable Protector range is available as 6' or 30' lengths. And being a flexible material means lengths can easily be cut for perfect sizing.

Top Tip

Select Floor Cable Protector having a cable-cavity size that can accommodate the cables to be hidden.



Beware alternatives can be too flimsy, or too stiff so they cannot lie flat... these types can be worse trip hazards than the actual cables!

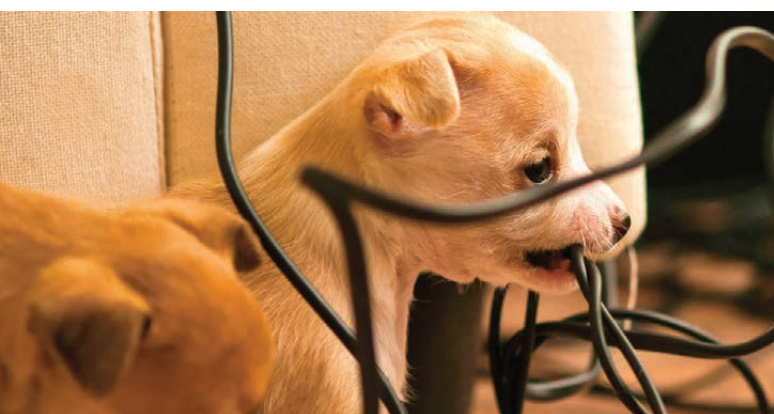
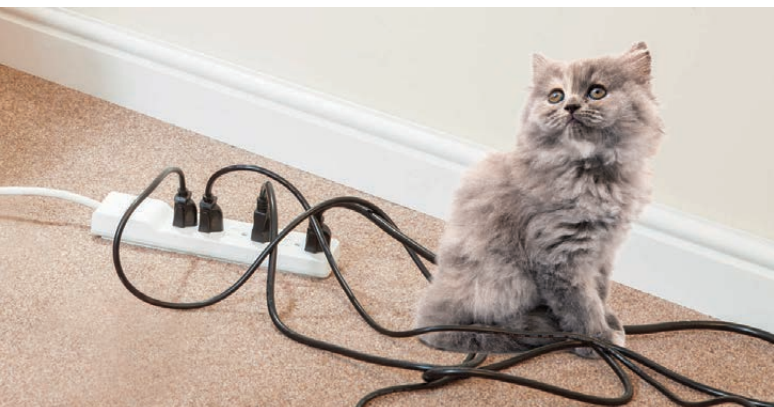


Another piece of equipment most home gyms will be better for is a wall-mounted TV, helping to keep focus and make those difficult time sacrifices more bearable!

To save channeling walls to hide cables, D-Line PVC Raceway offers a Cable Hider solution that can simply peel and stick.

D-Line's ½-round lengths have a hinged & click-lock lid that makes it easy to later add or remove cables, with the stylish design giving a perfect finish for the set-up of your new fitness room.

KEEPING WIRES SAFE FROM PETS IS SIMPLE AS A, B, C... D-LINE



Pet owners can make their homes (& pets!) safer, without compromising on aesthetics, by easy-to-use products which keep wires away from our furry friends.

D-Line's cable management range allows home owners to hide cabling and wiring, in ways that stop pets from being able to chew on the wires.

As Louise Scott from D-Line explained, **“One of the problems that animal lovers have to contend with is making the house safe for their pets, very much the same as parents do with small children.”**

Cats, dogs, even house rabbits and smaller animals might love having freedom of the home, but it can be tempting for playful and curious pets to chew through cables left uncovered. However split cable insulation can cause electrocutions, and broken cable-conductor strands create hot-spots which can make cables a fire hazard...but any cable risks can be easily sorted!

“Before D-Line, there were few options, short of knocking a hole in the wall to hide the wires, or using a blocky plastic strips of sharp edge raceway which isn't aesthetically pleasing.”

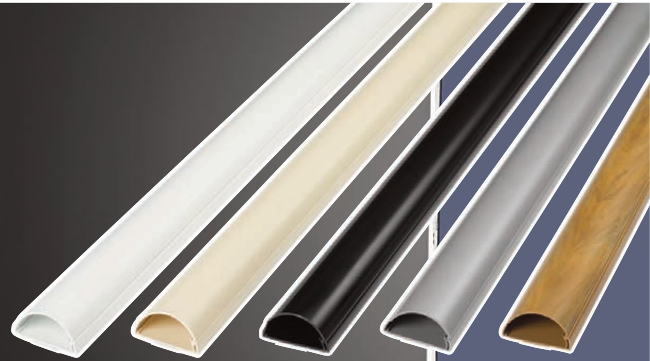
D-Line provides stylish cable hider solutions, including self-adhesive ½-round raceways that can blend above baseboards or attractively cover cables dropping vertically from a wall mounted TV.

Alternative ¼-round cable hidere provide cable paths at floor level, and popular Cable Organizer Boxes contain socket extensions and cable clutter. Spiral Wrap and Cable Tubes are examples of other D-Line solutions for concealing wires that, to a pet, might seem inviting to nibble or bite!

Louise said: **“D-Line solutions combine practicality, safety and style so the cables seem to disappear in products that are designed for modern interiors. They are easy to use by requiring no electrical competence as most simply retro-fit around existing cables. And being inexpensive means there's only ever a small price to pay for our peace-of-mind”.**

CABLE MANAGEMENT FOR TV WALL-MOUNTS

As slim TV's inspire demands for wall mount brackets, so D-Line is the perfect solution for sorting your cables...



Routing cables behind a wall can be an awkward job, with the added hassle if you later need to add or remove a cable, perhaps for a Cable Box or gaming set-up. **But with D-Line's modern & no fuss Cable Hiders, TV cables can be out of sight but still remain accessible!**

D-Line lengths are non-metallic so can easily be cut as required, according to viewing height preferences also. Note - a trend towards bigger screens is making shorter lengths most popular, especially when the cables are dropping behind furniture.

Stylish ½-round designs are available in different colors to match popular screen trims and can blend with décor. Alternatively, D-Line lengths can be painted. The ½-round shape make the profiles easy to clean too.

The adhesive backing on D-Line lengths then enables simple peel & stick installation, or they can be drilled.

D-Line's hinged and click-lock lid ensures the cord hider is easy to open & close, keeping cables handy and making your set-up most versatile.

Top Tips

If necessary, D-Line can be cut shorter by using a junior hacksaw

When selecting a D-Line profile, consider...

- The amount of cables (& the cable diameters) to be contained ref capacity required
- Width of TV screen. Even if only 2 or 3 cables, note TV's wider than 30" scale well with D-Line's 2"x1" / 50x25mm (width x height) profile.



If connecting TV cable to power sockets, aerial points or surround sound speakers, other D-Line lengths and accessories can enable a perfect finish

RACEWAYS THAT STICK AROUND, FOR AS LONG AS YOU LIKE



So you've pencil marked the layout of exactly where you want your D-Line surface raceways, cut the lengths to size with a fine saw-blade, and considered gaps for any connector or bend accessories to be inserted...

Now with the hinge at its base and click-lock at topside, one easy way to affix raceways is to gently peel the liner at one end from its backing tape, hold up the raceway length(s), and apply finger pressure to stick the first inches up to the pencil mark.

Then slowly move along the length(s); peeling, pressing and firmly sticking the raceway as you go. Finally insert the cables, and attach any accessories. Job done!

Assuming the surface was clean and level flat, not dusty and uneven or textured, then at normal room temperatures you'll have created a bond that should last for years.

Alternatively, D-Line raceways can be drilled and screw-fixed, with the choice of fixing being dependent on the type of surface.



A plasterboard drywall should use an anchor, so the screw attaches through the raceway drill-hole into the anchor. Screws (& wall anchors) in the raceway should be spaced no more than three foot apart.

PVC raceways mounted on brick or wood can be installed by drilling a pilot hole into the solid substrate, then tighten the screw through the base of the raceway.

Thinking ahead, if you need to remove the raceway, drill holes can simply be filled with fillers or putty's then made smooth flush by using a knife and sandpaper! For various ways to eliminate any tape residue, see Top Tips below.

There is no right or wrong way, and really the question of whether to stick or drill raceway has ready made answers that shouldn't leave you stuck when deciding your best way!

Top Tips

- Do not apply tape to newly painted walls - paint needs at least one week to have a firm grasp.
- Tapes can damage wallpaper, or leave residues.
 - Soapy water is ideal for glass or marble surfaces.
 - Adhesives left on wallpapers and paintwork can often melt with hairdryer heat, and will lose adhesion when treat by nail varnish remover or alcohol spirits.

While no guarantees are offered, these options can make it easier to gently scrape and rub away tape residue.

- If screw-fixing for multiple lengths - a cordless screwdriver can make the job easier!

DESIGNING THE PERFECT RACEWAY

Incredibly, to hide cords before 2006 there was two main choices only - either blocky strips of white plastic, rectangular/square, with a clip-on lid and sharp edge; or trying to put cords behind the wall or underfloor, often incurring hassle & redecorating.

D-Line was inspired by the want for a cable management solution that could be 'easy to use & look great!'

With an alternative being long overdue, in 2006 D-Line progressed to challenge every element of traditional raceway in pursuit of a new & modern way to hide cables.

Below were some of the design challenges & our answers...



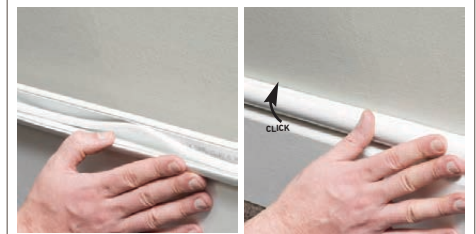
The shapes. In one move, by rounding the design, our new profiles did not look like 'unfashionable' raceways!

With no sharp edges, D-Line's subtle appearance can uniquely blend with contemporary decor.



One piece. Having a hinge to join the base and lid means there is only one-piece to handle, saving installation time.

Then there is no risk of the lid detaching, saving maintenance time.



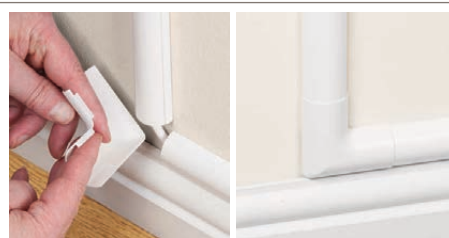
Click-lock lid. A raceway's lid must lock effectively & securely, to contain the cables.

Still, it should be possible to later add or remove a cable(s)... the end-section of D-Line's lid is held by a special groove; if needed, this can be pushed up-and-over to access the cable compartment.



Non Metallic. Raceway lengths often need cutting to specific requirements. That's why we use quality uPVC that is rigid but lightweight and easy-to-cut.

To protect cables from impact, it is important the uPVC is at least a particular thickness. And we include UV-stabilizers so D-Line products will not discolor in sunlight.



Corner Bends. Adding accessories, such as bends & tees can be awkward.

It doesn't matter however if a D-Line length is cut oblique, or a gap is visible from an imperfect measure, because D-Line's clipping over-the-top method of installing corner bends & tees means the cut is never exposed.



Easy-to-install. Peel and stick tapes enable quick & easy installation, but D-Line lengths can be drilled and screw-fixed also.



Perfect condition. We want your D-Line to arrive in perfect condition, no dust or scratches, so we apply removable film cover to protect lengths.



Paintable. We offer different colors which often saves need for paint, but we appreciate how decor changes. No worries D-Line can be painted! - best to firstly key the surface.



Range. With Raceways, one size never fits all! So we've many profiles, in a variety of colors, and wide ranges of accessories to enable a perfect finish.



Recyclable. Once D-Line's tape is removed, the uPVC can be recycled and ground for example in to a micronized form before use in other forms.



D-Line (USA) Inc

1841 Taylor Avenue, Building 39, Louisville KY40213 U.S.A

Tel: 1-800-901-4396 **Email:** enquiries@d-line-it.com **Web:** www.d-line-it.com